

**INTERNATIONAL
HANSA 2.3, 303 & Liberty plus 2.4mR
OPEN SAILING CHAMPIONSHIPS**

HONG KONG 2019

TO BE HELD IN THE WATERS OF PORT SHELTER, HONG KONG

2nd December 2019 to 8th December 2019

NOTICE OF RACE

The notation '[NP]' in a rule means that the penalty for breach of that rule may, at the discretion of the protest committee, be less than disqualification.

1. ORGANISING AUTHORITY

The Organising Authority is the Hebe Haven Sailability Trust (HHST), the Hebe Haven Yacht Club (HHYC), the Hong Kong Sailing Federation (HKSF) and in conjunction with World Sailing.

2. RULES

2.1 The regatta will be governed by the *Rules* as defined in the *Racing Rules of Sailing 2017-2020*.

2.2 HKSF prescriptions HK1 shall apply.

2.3 The following rules shall apply:

- (a) The Hansa 2.3 Class Rules;
- (b) The Hansa 303 Class Rules;
- (c) The Liberty Class Rules;
- (d) The International 2.4mR Class Rules;
- (e) Para World Sailing Race Management Manual 2017-2020;
- (f) PY handicap ratings in effect as at 1 December 2019;
- (g) This Notice of Race and the International Hansa 2.3, 303 and Liberty Plus 2.4mR Open Sailing Championships, Hong Kong 2019 Sailing Instructions.

2.4 The Race Committee reserves the right to issue amendments to this Notice of Race. In the event of an amendment being issued, it will be published on the Event website and additionally all registered competitors at the time of the amendment will be alerted to the amendment.

3. ADVERTISING and MEDIA

3.1 The World Sailing Advertising Code shall apply.

3.2 Competitors may be required to display advertising chosen and supplied by the Organising Authority.
[DP]

3.3 Boats may be required to carry cameras, sound equipment or positioning equipment as specified by the Organising Authority. Information from this equipment shall not be used by a boat as evidence in a protest hearing. This changes rule 63.6.

3.4 By entering this race, each participant grants to the organising authority and the sponsor and affiliated companies at no cost the absolute right and permission to use their names, voices, images, likenesses and biographical material, as well as representations of their boats in any media (including television, print and internet).

4. ELIGIBILITY and BOAT ALLOCATION

4.1 The regatta is open to all boats of the following classes:

- (a). Hansa 2.3 class (Double or single handed)
- (b). Hansa 303 Class (Double or single handed)
- (c). Liberty Class
- (d). 2.4mR Class

4.2 The Championship is an inclusive event and entries from those having a disability or otherwise are equally acceptable and encouraged; save that entry will be available to all equally on a first come first served basis.

4.3 Class crew and boat allocations.

4.3(a). Due to the limited availability of boats, the Hansa 2.3 and Hansa 303 class crews may be double or single handed.

4.3(b). Liberty and 2.4mR will be singlehanded.

4.3(c). Competitors may bring their own boats. If so, transportation costs and insurance are to be borne by the owners of the shipped boats. Participants who intend to ship their own boats are requested to liaise with the Organising Committee to ensure that the process of unloading meets the expectations of all parties. Shipments will not be accepted without prior arrangements. Where Nations are unable to bring their own boats, it is intended that a limited number of boats will be supplied by the Organising Authority on a first come, first served basis.

4.3(d). A minimum of 3 entries is required for each class. Any boats not able to form a class may form a mixed open division based on PY ratings.

4.3(e). The Organising Authority will allocate boats to those Nations unable to bring their own boats. This allocation will be undertaken by 'draw'. The details of this draw will be available in the Sailing Instructions and will take into account functional adaptations of individual boats in the case of Para sailor entries e.g. servos or other major adaptations.

4.3(f). All competitors shall be current members of their National Class Association or the International Class Association.

5. ENTRY TIMETABLE

5.1 Entries should be received by 12:00 (Hong Kong Time) 18th October 2019. Fully completed entry forms and payment should be completed no later than this date. Entry details and payment methods will be posted on the Sailability Hong Kong website (www.sailability.org.hk) no later than 1st February 2019.

5.2 A reduced Entry Fee is available for participants completing Entry requirements prior to 12:00 (Hong Kong Time) 18 September 2019.

5.2 Entries received after 12:00 (Hong Kong Time) 18th October 2019 or entries where an entry fee or entry details remain outstanding after to 12:00 (Hong Kong Time) 18th October 2019 will incur a late fee as set out in Section 8 below.

5.3 All entry details and payment shall be completed by 12:00 on 1st November 2019, unless written dispensation is granted by the Race Committee.

6. ENTRY

6.1 Eligible Competitors and coaches may enter by completing the on-line entry form on the event website <https://www.sailabilityhk.org/> and paying the required fees as set out in Section 5 above and Section 8 below.

6.2 Competitor registration is subject to:

6.2(a). entry fee receipt;

6.2(b). class association membership accreditation document;

6.2(c). copy of Identity Card or passport;

6.2(d). valid third-party liability insurance accreditation document in English.

6.3 Coach/Assistant/Supporter registration is subject to:

6.3(a). Entry fee receipt;

6.3(b). Valid third-party liability insurance accreditation document in English.

7. SAILS

7.1(a). Competitors are required to provide their own sails duly certified and measured by a class representative. This may be verified by the Organising Authority.

7.1(b). The organising authority may provide sails if required. An application for use of sails should be made to the Race Committee before 1st November 2019. A limited number of sails will be available on a first come, first served basis.

8. FEES

8.1 Entry fee per boat will be as follows:

Event	Class	Early Bird Entry Fee Prior to 12:00 (HKT) 18 th September 2019	Entry Fee between 12:00 (HKT) 18 th September 2019 to 12:00 18 th October 2019	Late Entry Fee (HK\$) After 12:00 (HKT) 18 th October 2019
Single Handed	Hansa 2.3	HK\$600	HK\$750	HK\$900
Double Handed	Hansa 2.3	HK\$1000	HK\$1250	HK\$1500
Single Handed	Hansa 303	HK\$600	HK\$750	HK\$900
Double Handed	Hansa 303	HK\$1000	HK\$1250	HK\$1500
	Liberty	HK\$600	HK\$750	HK\$900
	2.4mR	HK\$600	HK\$750	HK\$900
Coach / Supporter / Assistant		HK\$300	HK\$400	HK\$500

8.2 Charter fee per boat will be as follows:

Class	Charter Fee
Hansa 2.3	HK\$8,000
Hansa 303	HK\$12,000
Liberty	HK\$15,000
2.4mR	HK\$20,000

8.3 A limited number of RIBS may be available for charter. The Organising Committee will provide contact details of local charterers to any participants who wish to charter a RIB. The Organising Committee will not take any further part in the charter process and is not responsible for the condition of the RIB or for negotiation of fees. Please be aware that any motorised vessel must have a holder of a Hong Kong Pleasure Vessel Operators Licence (PVOL) on board, in charge of the vessel.

9. EVENT SCHEDULE

9.1 Measurement

9.1(a). Sail measurement checks will take place at Hebe Haven Yacht Club on 2nd and 3rd December 2019 between 09.00 and 17.00 and between 09:00 and 10:00 on 5th December 2019.

9.1(b). The Technical Committee may inspect all aspects of equipment class rules at any time during the regatta.

9.2 Registration and Briefings

9.2(a). Registration will take place at the Hebe Haven Yacht Club on 2nd, 3rd and 4th December 2019 between 09.00 and 17.00hrs and between 09:00 and 10:00 on 5th December 2019;

9.2(b). Skippers briefings will be conducted at 10:00 on 5th December 2019. The briefing will be in English and is open to all competitors and mandatory for coaches and assistants.

9.3 Races

9.3(a). It is intended that the event will comprise a maximum of 10 races for all classes. There will be a single series for all classes.

2nd & 3rd December – Registration and Measurement

4th December – Practice race

5th December - 2 races

6th December – 3 races

7th December – 3 races

8th December – 2 races

9.3(b). The number of races completed will be a function of the wind conditions prevalent on the days of racing and may be amended according to conditions at the discretion of the Race Officer.

9.3(c). On 5th December 2019 the first Warning Signal is scheduled for 12:55 hours, the subsequent race(s) to follow as soon as practicable.

9.3(d). On 6th, 7th & 8th December 2019 the first warning signal is scheduled for 10.55 hours, subsequent races to follow as soon as practicable.

9.3(e). On 8th December 2019, no warning signal will be made after 14:00 hours.

10. VENUE

10.1 Sailing shall be held in the vicinity of Port Shelter 22° 20N - 114° 16 E. See Appendix A.

10.2 The host club is Hebe Haven Yacht Club.

11. THE COURSES

11.1 It is intended that courses will be windward/ leeward and/or trapezoid configuration.

12. SAILING INSTRUCTIONS

12.1 Sailing Instructions will be made available by 25th November 2019 at the venue and may be posted on the event website at that time or before.

13. PENALTY SYSTEM

13.1 RRS 44.1 is changed so that the Two-Turns Penalty is replaced by the One-Turn Penalty.

13.2 Appendix P may apply. If so this will include on-water observing of the relevant associated class rules. Details will be given in the Sailing Instructions.

13.3 Limited on-water judging may apply. If applied details will be given in the Sailing Instructions.

13.4 Penalties for breaking rules related to functional adaptations: When a protest committee decides that a boat has broken rules related to functional adaptations, or a class rule, it may disqualify the boat or impose a scoring penalty of any percentage to be calculated in accordance with RRS 44.3(c), or give a warning.
[DP]

14. SCORING

14.1 Ten Races are scheduled.

14.2 Three races are required to be completed to constitute a series.

14.3 The low point scoring system of RRS Appendix A will apply, except as modified in Section 14.4.

14.4 When Five or less races have been completed a boat's series score shall be the total of her race scores, when six or more races have been completed a boat's series score shall be the total of her race scores excluding her worst score. (This changes RRS A2.1).

14.5 For the Hansa 2.3 and Hansa 303 entries, if applicable - refer 4.3d, the PY may be used to determine overall placings due to there being both single handed and doubled handed competitors taking part.

15. SUPPORT BOATS

15.1 Support boats will be limited in number but will be provided free of charge upon request. Boats will be provided on a shared nation basis. Each coach shall provide their national flag which will be flown from their coach boat. Such boats must have a holder of a Hong Kong Pleasure Vessel Operators Licence (PVOL) on board, in charge of the vessel.

15.2 The Sailing Instructions may contain restrictions on the activity of the support boats.

16. LAUNCHING, BERTHING AND HAUL OUT RESTRICTIONS

16.1 A crane will be available before and after the regatta and will be located on the HHYC hardstanding area.

16.2 All Liberty and 2.4mR keel boats shall be afloat by 10.00 hours on 4th December 2019. [DP]

16.3 Boats including coach/support boats shall be kept in the assigned places in the HHYC docking area.

16.4 Instructions from the crane manager and Organising Authority shall be fully observed.

16.5 Liberty and 2.4mR shall not be hauled out during the regatta except with written permission from the Race Committee. Hansa 2.3 and 303 class boats may be lifted out each day.

16.6 Underwater breathing apparatus and plastic pools or their equivalent shall not be used around any boat between the preparatory signal of the first race and the end of the last race.

17. RADIO COMMUNICATIONS

17.1 Except in an emergency, a boat that is racing shall not make voice or data transmissions and shall not receive voice or data communication that is not available to all boats.

18. PRIZES

18.1 The overall winner in each class will be awarded the title of "2019 Hong Kong (Class) Open Champion" (2 Hansa 303, Hansa 2.3 or Liberty or 2.4mR) as appropriate.

18.2 Prizes will be presented 1st to 3rd placed boats in each class.

18.3 The Prizegiving will be held in the Garden Bar at Hebe Haven Yacht Club as soon as practicable after end of racing on 8th December 2019 not before 1600 hours and otherwise at approximately 2.5 hours (150minutes) after the last boat finishes the last race of the day.

19. DISCLAIMER OF LIABILITY

19.1 Competitors participate in the regatta entirely at their own risk. See rule 4, Decision to Race. The Organising authority will not accept any liability for material damaged or personal injury or death sustained in conjunction with or prior to, during, or after the regatta.

20. INSURANCE

20.1 Each participant shall be insured with at least the minimum cover of valid third-party liability insurance required under HKSAR legislation. Reference may be made to the document on Compulsory Insurance on the HKSAR Marine Department Website: -

https://www.mardep.gov.hk/en/pub_services/ocean/ocean.html.

20.2 Any Insurance must cover the racing boats in HK waters, and be subject to HK maritime law and able to be collected in HK where equipment provided by the organising authority is used.

ADDITIONAL INFORMATION

A1. ACCOMODATION

A1.1 It is intended that accommodation in local hostels will be found for overseas competitors at their own cost. Competitors are of course able to make their own hotel / hostel bookings directly.

A2. CATERING

A2.1 Hebe Haven Yacht Club has extensive catering facilities and there are numerous restaurants nearby and /or in Sai Kung.

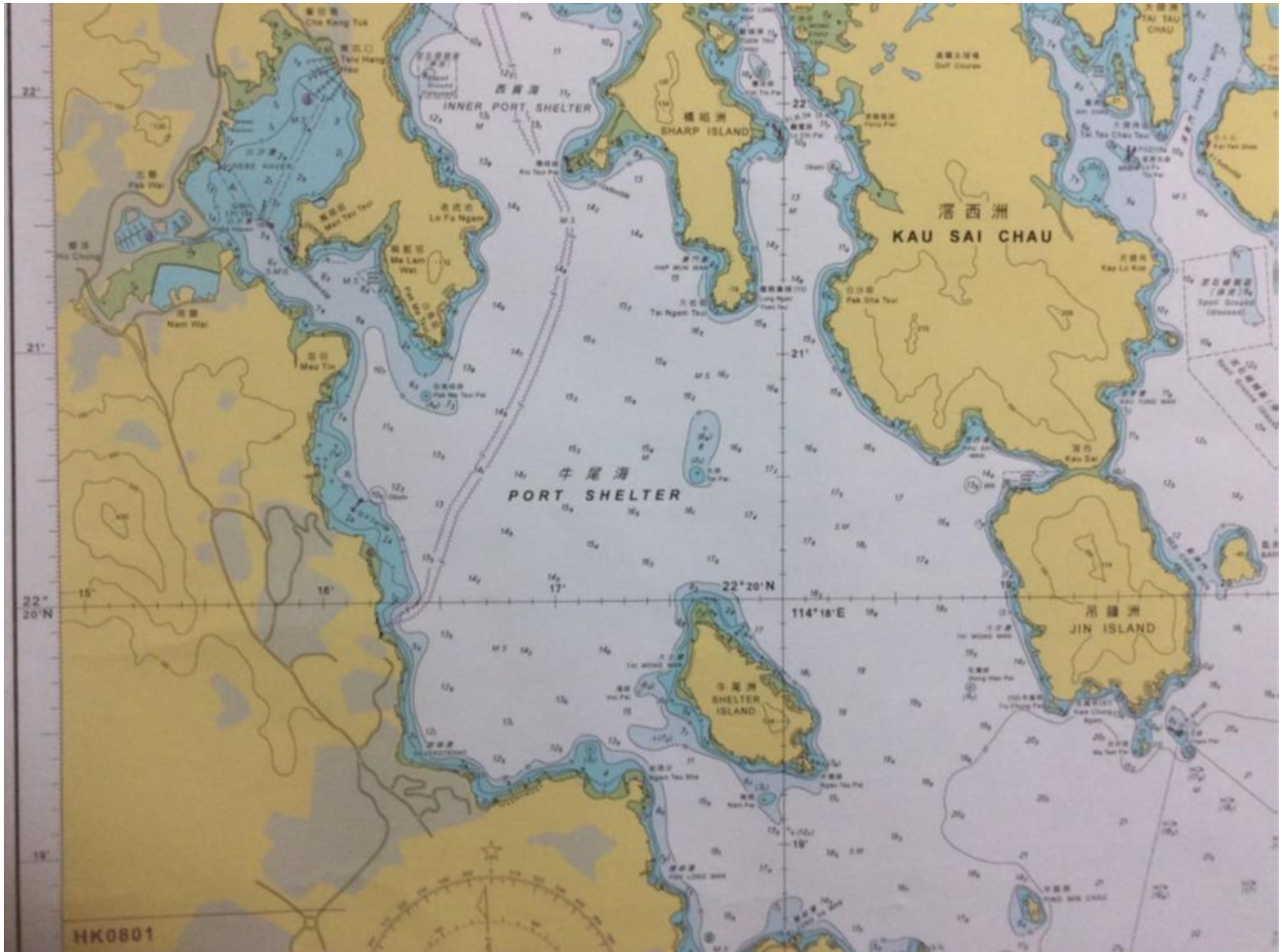
A3 PUBLIC FACILITIES

There are supermarkets in Sai Kung and Hang Hau.
Frequent bus services within 100 metres of the venue.
Vehicle access is available into the venue.
Parking is limited and must be arranged in advance.
Public hospitals are located at Tseung Kwan O, Shatin and numerous other locations.

A4 VISA REQUIREMENTS

Visa Requirements for entry into Hong Kong can be found here:
<https://www.immd.gov.hk/eng/services/visas/visit-transit/visit-visa-entry-permit.html>

APPENDIX A - RACE AREAS



Not to be used for Navigation