

TOKYO ● 2020

Sailing

TECHNICAL PROPOSAL

Thank for your cooperation to the award of
TOKYO ● 2020



Tokyo 2020 Bid Committee



CONTENTS

01	Tokyo 2020 Vision and Concept	1
02	Olympic Village	3
03	Accommodation	5
04	Competition and Training Venue	6

This technical proposal was produced in accordance with the IOC Technical Manual on Design Standards for Competition Venues, International Federation regulations and standards, and with the cooperation of the National Federation. Requirements and standards have been confirmed with the NF.

Discover Tomorrow

Tokyo's bid to host Olympic and Paralympic Games is underpinned by **a belief in the power of sport, and its ability to inspire dreams** and deliver positive change.

The Tokyo 2020 Games will embody the **values that the Olympic Movement share with the people of Japan**, for whom excellence, friendship and respect are a way of life. Using Tokyo's energy and innovation, we will celebrate Olympism in **the heart of one of the world's most dynamic, and safe, urban environments**.

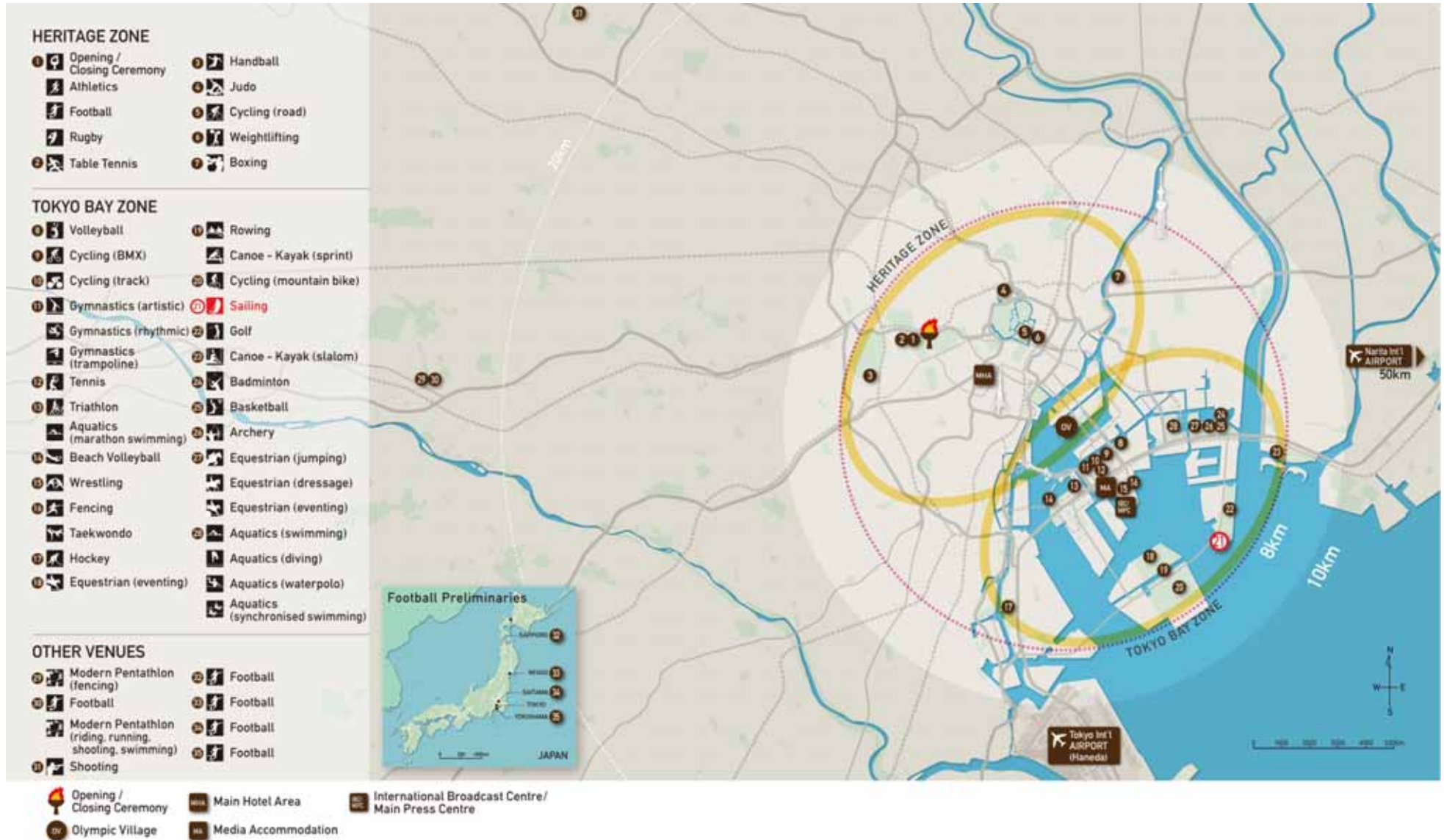
Just as the city's world-renowned safety and security, and cleanliness and abundance of greenery will provide **an ideal environment for athletes**, the city's unmatched accommodation, infrastructure, and transport will ensure operational excellence and efficiency.

All major facilities including the Olympic and Paralympic Village, IBC, MPC and Olympic and Paralympic Family hotels, together with 90 per cent of competition venues, are located within 8km of the Olympic Village and **fully integrated with the city, its people and their future**.

Venues are organised into two zones that intersect at the Olympic Village. The Heritage Zone embraces the legacy of the 1964 Olympic Games and the city's historical centre, while the Tokyo Bay Zone spans the city's lively modern waterfront.

The bid is playing an important role **in the process of Japan's spiritual and physical recovery** following the 2011 earthquake and tsunami. And, should we be successful in securing the honour of hosting the 2020 Games, it will be an extraordinary opportunity to welcome and thank the international friends who supported our nation and our people during these difficult times.

Using the world-renowned Japanese culture of innovation for the long-term benefit of sport, Tokyo will renew and reinforce the Olympic Values for the 21st century. In Tokyo you will be able to **Discover tomorrow**.



02 Olympic Village

Prime Location

The centrally located Olympic Village will provide easy access to the Tokyo 2020 Olympic Games venues – most travel times will be less than 20 minutes. The attractive foreshore Village location, in one of Tokyo's most thriving districts, features many entertainments and commercial activities as well as parks and greenery.

Athlete-oriented Plans

The magnificent waterfront site, the excellent urban design, and the extensive landscaping will provide an environment for athletes that is both exciting and tranquil.





Japanese Traditional Hospitality

Olympic Village staff members will be instilled with Japanese traditional hospitality, so that people of diverse ethnicities, customs, and religions are able to enjoy a comfortable stay in Japan. In the spirit of traditional hospitality, the staff and volunteers will provide individual service that is timely, appropriate, polite, kind, and accurate. The Olympic Village will provide its residents with an efficient, comfortable and memorable staying.

03 Accommodation

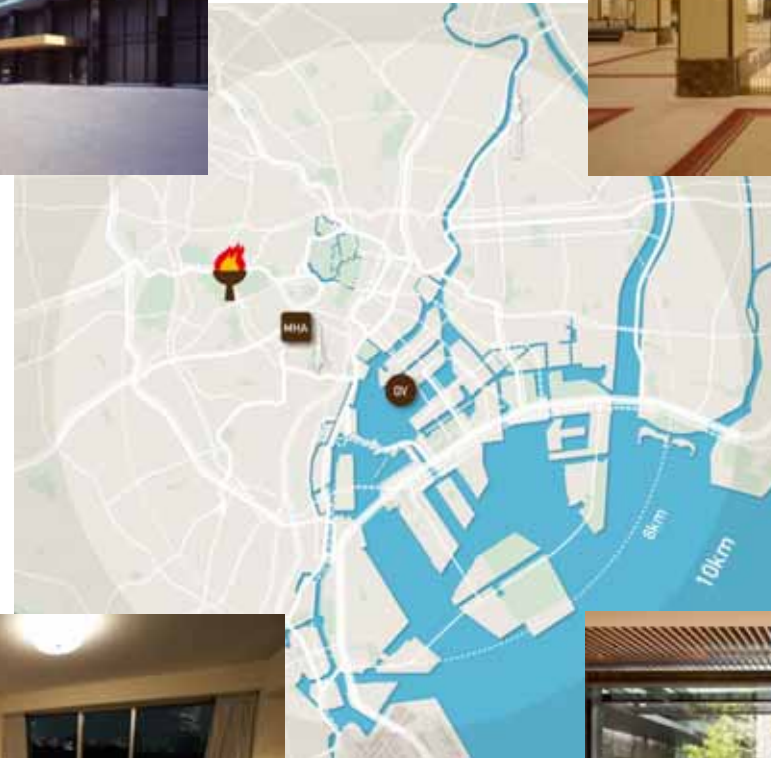
Not only is Tokyo the political and economic centre of Japan, it is also a major tourist destination.

Hotels in Tokyo are exceptional by international standards in terms of room inventory as well as the quality of facilities, amenities, and service.

Within a radius of 10 km from the Olympic Games centre, Tokyo has more than 86,000 hotel rooms, and there are more than 140,000 rooms within a 50 km radius.

The Tokyo 2020 Bid Committee selected four or five-star hotels closer to the competition venues as IF hotels.

Please note that the selected IF hotels are the candidates at the present stage and final decision will be made in full consultation with IFs prior to the Games.

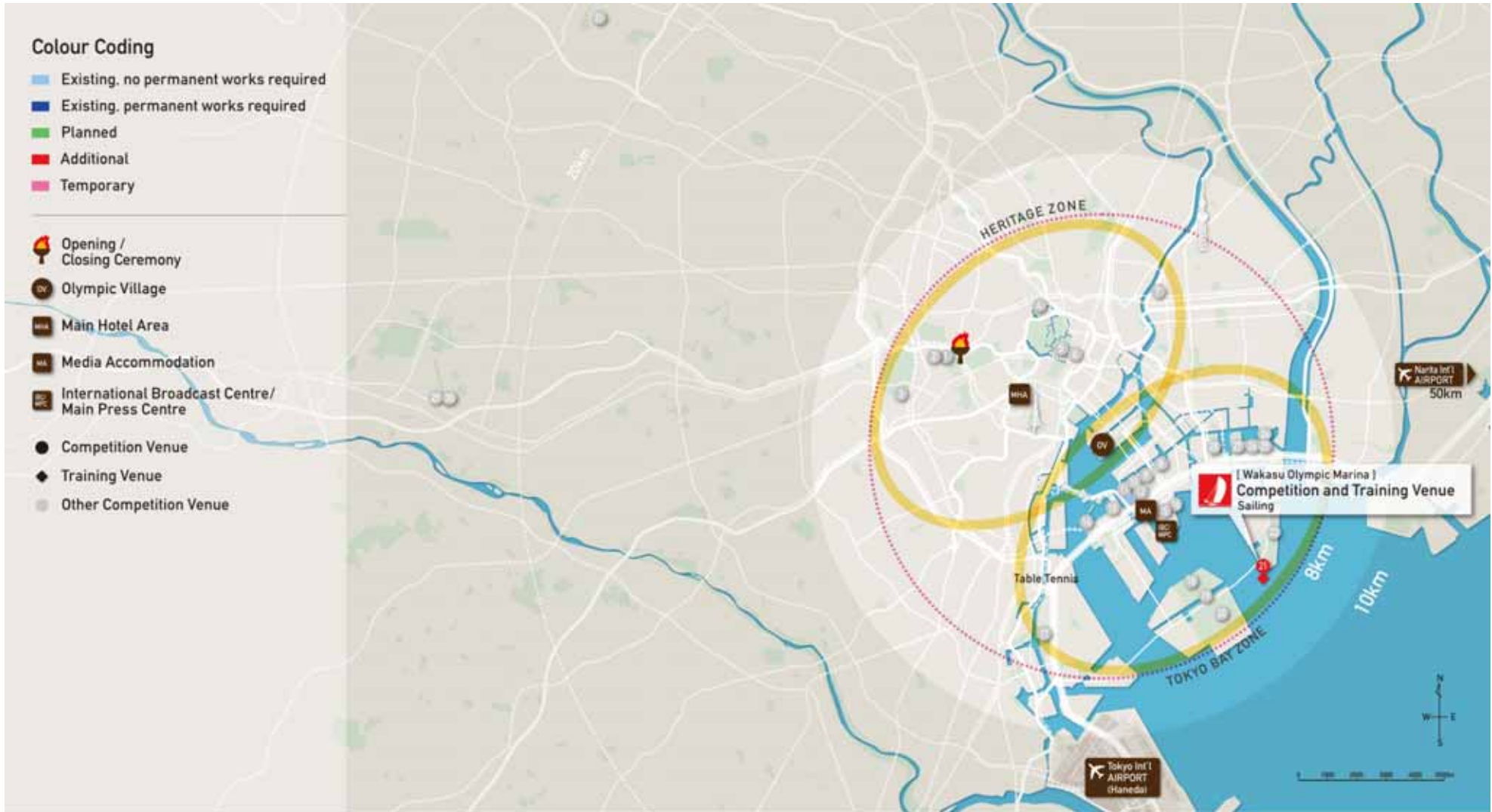


MHA Main Hotel Area
OV Olympic Village

*Hotel Images

04 Competition and Training Venue

1) Location Map



2) Wakasu Olympic Marina : Venue Description



Sailing competitions will be held at the Wakasu Olympic Marina. This full scale competition venue, located in Tokyo, will be built for the Olympic Games, and it will feature excellent access from the Olympic Village being only 10km and 10minutes away. The nearby Wakasu Park is an outdoor waterfront space that offers various recreational activities, and it will be used as an operations area during the Games.

Legacy / Sustainability

After the Olympic Games, this venue will continue its role as the centre for various marine sports, headlined by Sailing. This will also become a valuable place where Tokyo residents can relax by the sea.

Venue Capacity

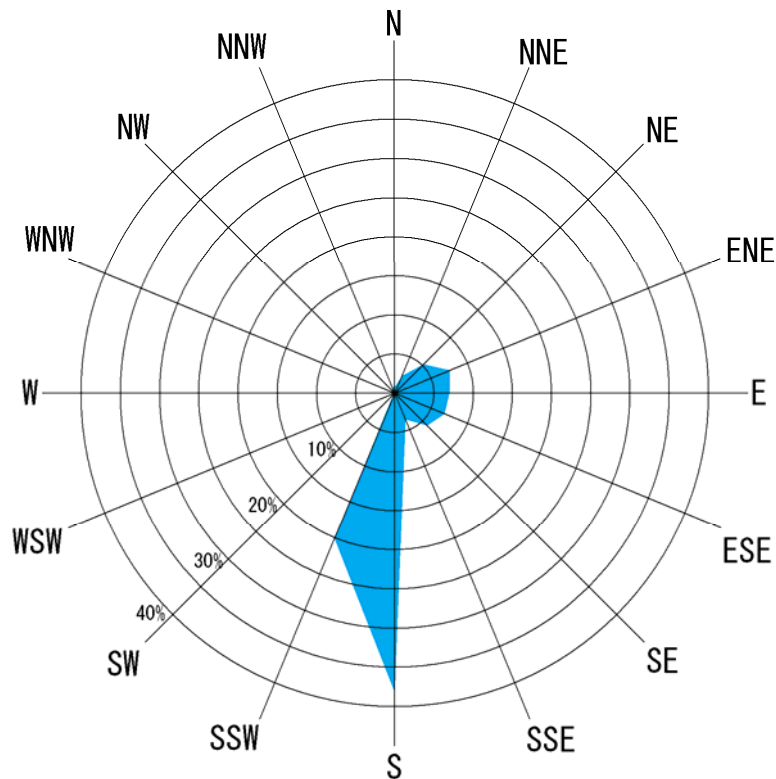
	Total Stand Seats	Athletes	International Federations	Olympic Family	Media	Spectators
Wakasu Olympic Marina	2,000		250			1,750

3) Course Plan



5) Wind Condition (2002-2011, 7/24-8/9)

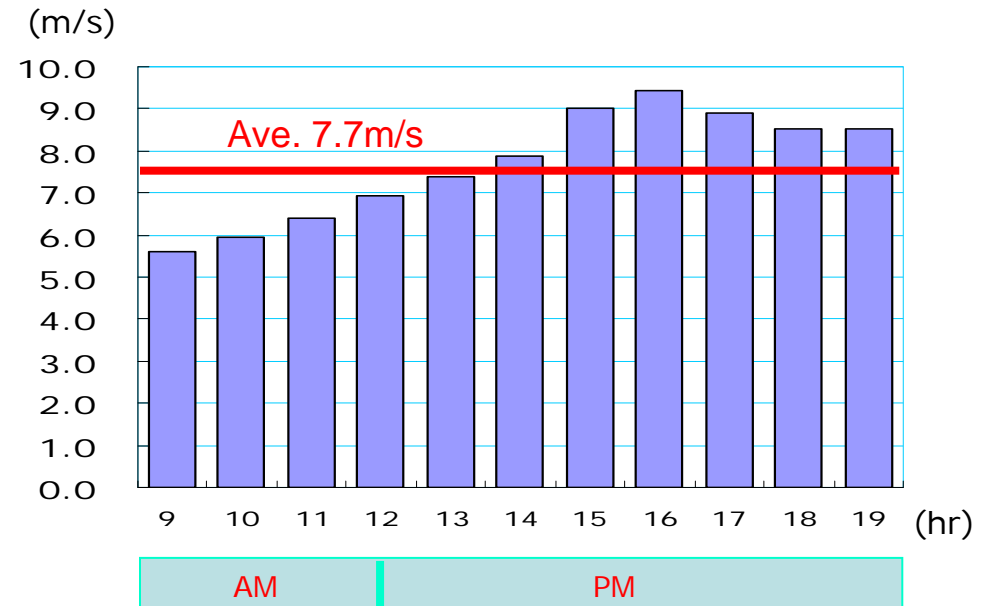
Wind direction
(2002-2011, 7/24-8/9)



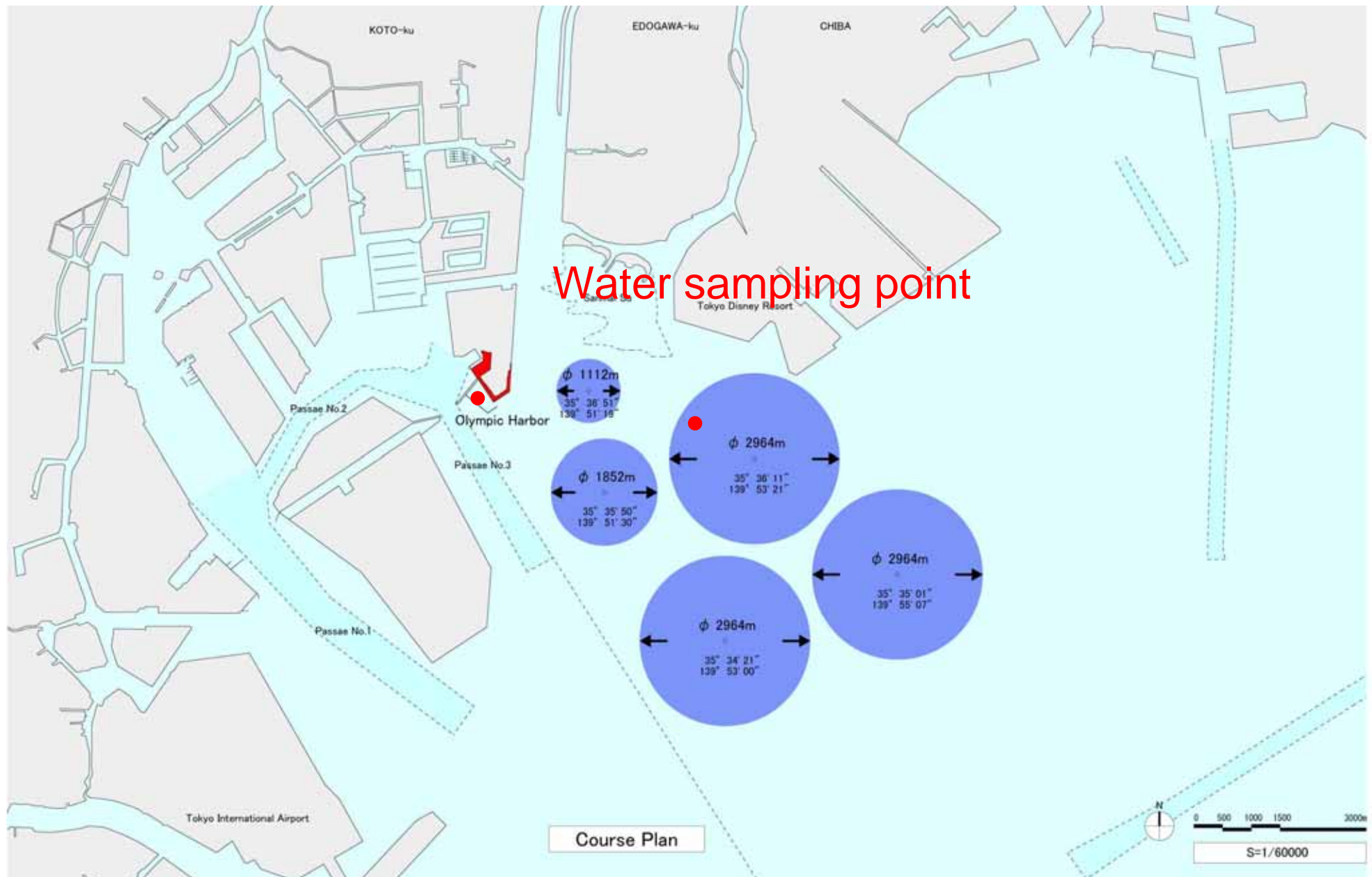
Venue Capacity

Average wind speed	7.7m/s
Dominant wind direction	S ~ SSW

Wind strength time distribution



6) Water Quality (sampling point)



7) Water Quality

		Fecal Coliform	Presence of Oil Slick	C O D	Transparency	ph
2012.7.25		6	Non-detection	2.3	1.4	8.6
		16	Non-detection	2.9	1.2	8.8
2012.8.6		6	Non-detection	4	2.1	8.4
		2	Non-detection	4.2	2	8.6

Water Quality Standard for Swimming

	Water Quality	Fecal Coliform	Presence of Oil Slick	C O D	Transparency (Depth of Water)	ph
Qualified	AA	Non-detection	Non-detection	Below 2mg/L (lake,marshes3mg/L)	Transparent (over 1 m)	-
	A	Below 100/100ml	Non-detection	Below 2mg/L (lake,marshes3mg/L)	Transparent (over 1 m)	-
Tolerable	B	Below 400/100ml	Hardly Detected	Below 5mg/L	(Between 50cm- 1 m)	-
	C	Below 1,000/100ml	Hardly Detected	Below 8mg/L	(Between 50cm- 1 m)	-
	Not Qualified	Over 1,000/100ml	Hardly Detected	Over 8mg/L	(Less than 50 cm)	

Evaluation : 2012 Results correspond to category B, Judging from Water Quality Standard

Water Quality for Radioactive material

		Radioactive cesium 134	Radioactive cesium 137
2012.7.18		Non-detection	Non-detection
		Non-detection	Non-detection

2012.8.15		Non-detection	Non-detection
		Non-detection	Non-detection

Water Quality Standard for Swimming

	Total Radioactive cesium (134+137)
Qualified	Under 10Bq/L
Not Qualified	Over 10Bq/L

Evaluation : 2012 Results correspond to **Qualified**,
Judging from Water Quality Standard

8) Competition Schedule

Wakasu Olympic Marina

	Wed 22 Jul	Thu 23 Jul	Fri 24 Jul	Sat 25 Jul	Sun 26 Jul	Mon 27 Jul	Tue 28 Jul	Wed 29 Jul	Thu 30 Jul	Fri 31 Jul	Sat 1 Aug	Sun 2 Aug	Mon 3 Aug	Tue 4 Aug	Wed 5 Aug	Thu 6 Aug	Fri 7 Aug	Sat 8 Aug	Sun 9 Aug	Total Gold Medals
	-2	-1	0	1	2	3	4	5	6	7	8	9	10	11	12	13	14	15	16	
Sailing					12:00- 18:00	12:00- 18:00	12:00- 18:00	12:00- 18:00	12:00- 18:00	12:00- 18:00	12:00- 18:00	12:00- 18:20	12:00- 18:20	12:00- 18:20	12:00- 18:10	12:00- 18:10	12:00- 18:10	12:00- 18:10		
												(2)	(2)	(2)	(1)	(1)	(1)	(1)		(10)

F=Final (medal)

Sports and Event

Men's	RS : X - windsurfer	Laser - One person dinghy	Finn - One Person Dinghy (Heavyweight)	470 - Two person dinghy
	49er - Skiff	Star - Keelboat		
Women's	RS : X - windsurfer	Laser radial - One person dinghy	470 - Two person dinghy	Elliott 6m - Match Racing

Men's = Men's events , Women's = Women's events

Proposals for IF test event

Month / Year	Note
Jul - Aug / 2018 and Jul - Aug / 2019	Test event will be held at Tokyo 2020 competition venue.

To contact :

JAPAN SAILING FEDERATION

Dr.Kishi Memorial Hall, 1-1-1 Jinnan, Shibuya-ku

Tokyo ZIP 150-8050 JAPAN

Tel:+81-3-3481-2357 Fax:+81-3-3481-0414

E-mail:head@jsaf.or.jp

